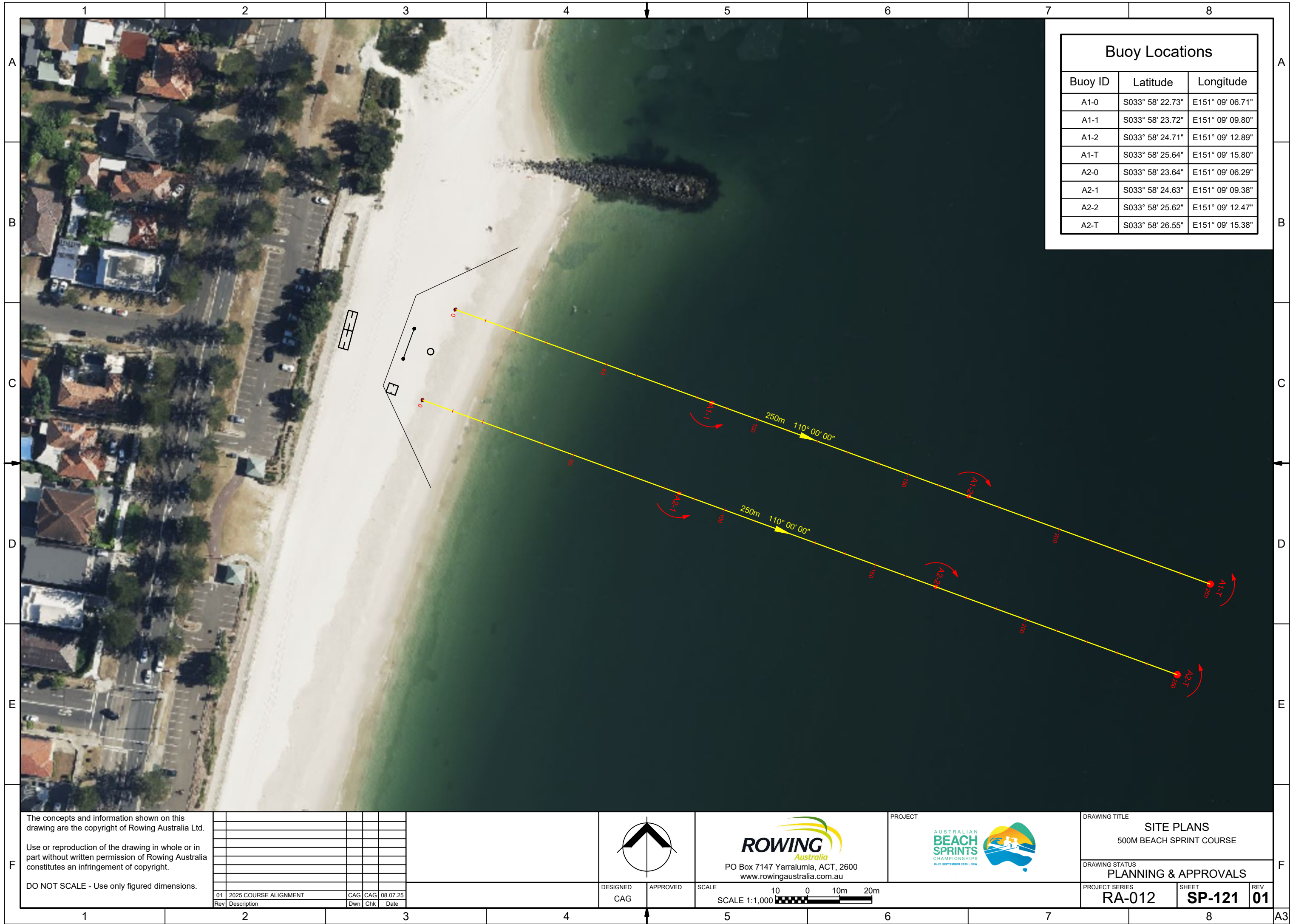


THIS SHEET HAS BEEN PREPARED IN COLOUR AND MAY BE INCOMPLETE IF COPIED



Buoy Locations		
Buoy ID	Latitude	Longitude
A1-0	S033° 58' 22.73"	E151° 09' 06.71"
A1-1	S033° 58' 23.72"	E151° 09' 09.80"
A1-2	S033° 58' 24.71"	E151° 09' 12.89"
A1-T	S033° 58' 25.64"	E151° 09' 15.80"
A2-0	S033° 58' 23.64"	E151° 09' 06.29"
A2-1	S033° 58' 24.63"	E151° 09' 09.38"
A2-2	S033° 58' 25.62"	E151° 09' 12.47"
A2-T	S033° 58' 26.55"	E151° 09' 15.38"


The concepts and information shown on this drawing are the copyright of Rowing Australia Ltd.

Use or reproduction of the drawing in whole or in part without written permission of Rowing Australia constitutes an infringement of copyright.

DO NOT SCALE - Use only figured dimensions.

01	2025 COURSE ALIGNMENT	CAG	CAG	08.07.25
Rev	Description	Dwn	Chk	Date

DESIGNED	APPROVED
CAG	



PO Box 7147 Yarralumla, ACT, 2600
www.rowingaustralia.com.au

SCALE
10 0 10m 20m
SCALE 1:1,000

PROJECT



AUSTRALIAN
BEACH
SPRINTS
CHAMPIONSHIPS
18-21 SEPTEMBER 2025 - NSW

DRAWING TITLE		
SITE PLANS 500M BEACH SPRINT COURSE		
DRAWING STATUS		
PLANNING & APPROVALS		
PROJECT SERIES	SHEET	REV
RA-012	SP-121	01